

Affordable

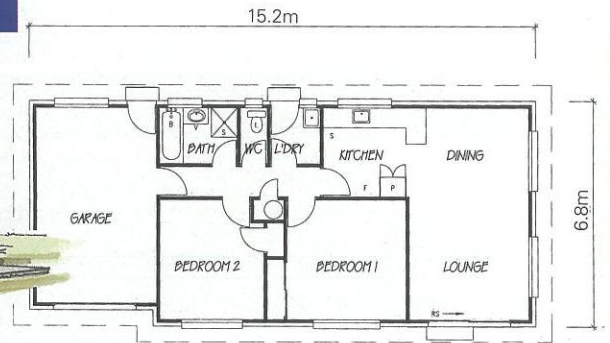
s e r i e s



Affordable
homes

Our Affordable series offers you comfortable, open plan living with a financially accessible range of plans (from 2-4 bedrooms) designed to reflect New Zealand lifestyles. These homes are thoughtfully planned for relaxed indoor/outdoor living. And, by adding your own creative landscaping, you'll not only increase the enjoyment of owning your own home, you'll increase the value too!

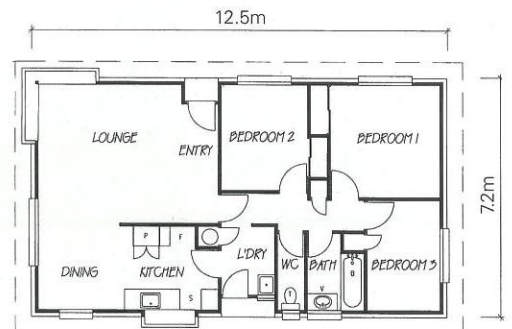
Affordable



101m², 2 bedroom home

- low maintenance, easy living
- internal access single garage
- ranchslider off lounge

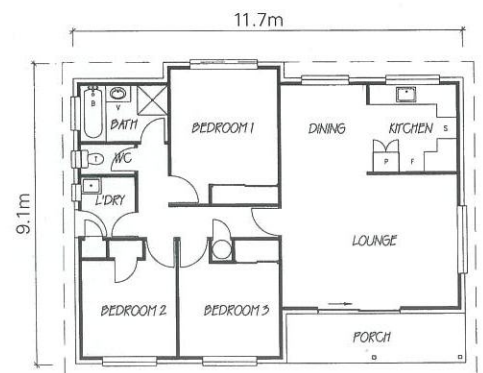
Pioneer



89m², 3 bedroom home

- makes the most of the sun and your living space
- galley kitchen with box window
- large corner box window in the lounge
- front entry door

Plimmerton



94m², 3 bedroom home

- compact, practical design
- large verandah off lounge with ranchslider
- attractive split roof design
- also available with attached garage

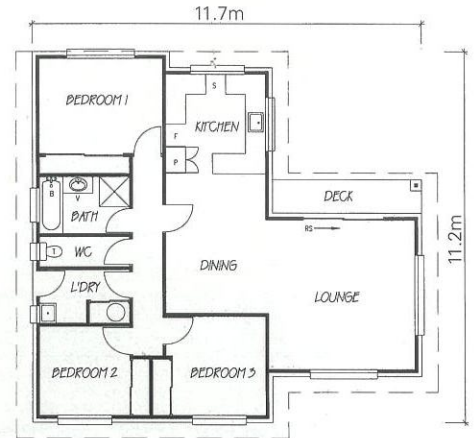


Lincoln



101m², 3 bedroom home

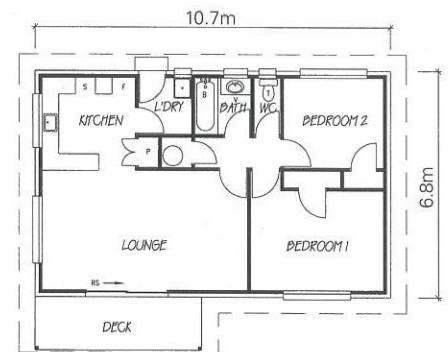
- soaks up the sun and the views
- verandah off lounge
- ranchslider
- open plan dining/lounge
- attractive and functional layout
- also available with attached garage



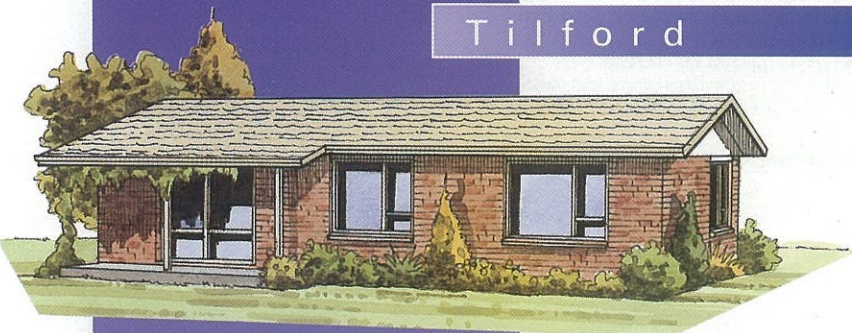
Sherborne

72m², 2 bedroom home

- perfect for a smaller section
- Customwood kitchen with pantry
- ranchslider off lounge
- covered verandah and deck

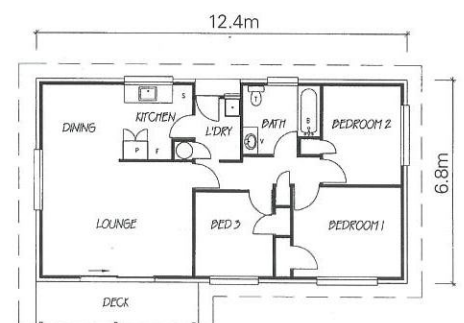


Tilford



84m², 3 bedroom home

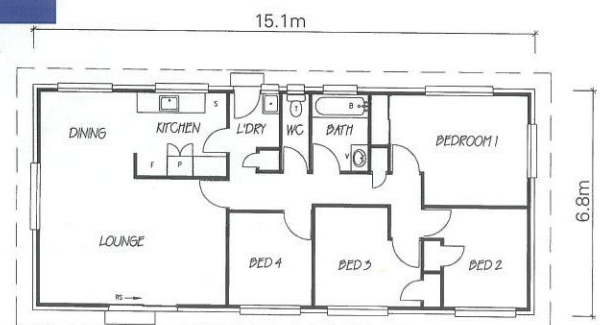
- practicality and style
- verandah off lounge
- ranchslider



Britten

102m², 4 bedroom home

- family living at its best
- galley kitchen with pantry and separate laundry
- ranchslider off lounge
- ideal for large families



Please note:

Exterior decking, paving and other landscaping are not included in our pricing. If you wish, they can be arranged as part of your overall home package.

At Affordable Homes, we are continually developing and enhancing our plans so some may vary, in detail, from those pictured. Your New Home Consultant will be able to advise you on this.

The drawings reproduced here are artists impressions only.

Larger copies of the floor plans are available from your New Home Consultant.

