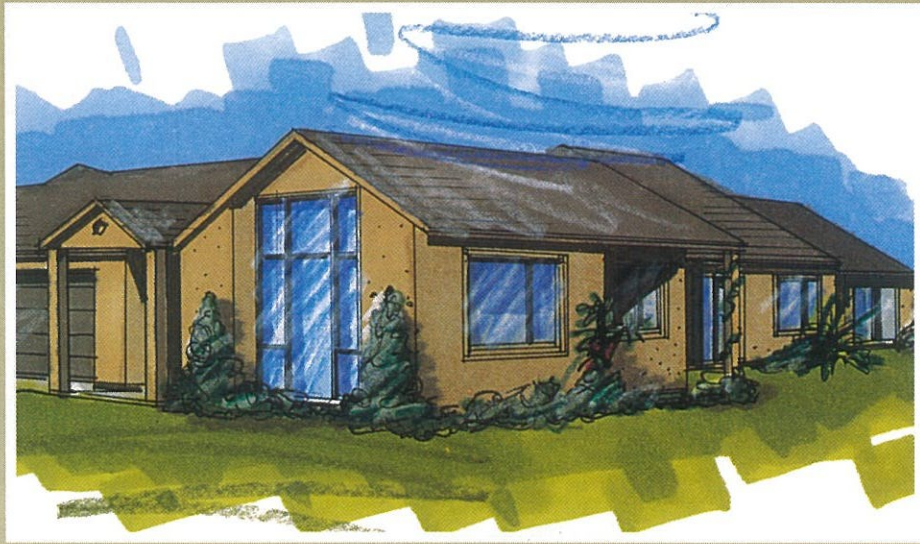


Millennium

s e r i e s

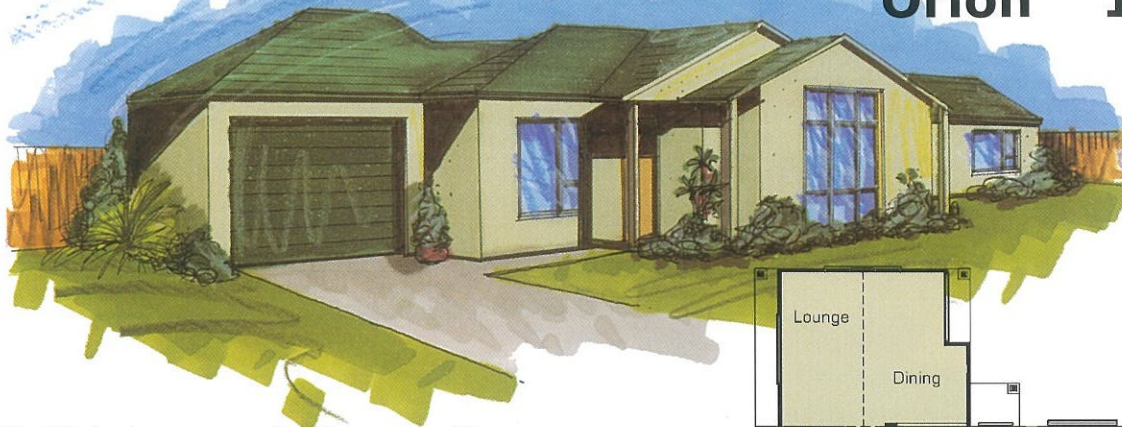


OUR LATEST PLANS WILL MATCH YOURS.

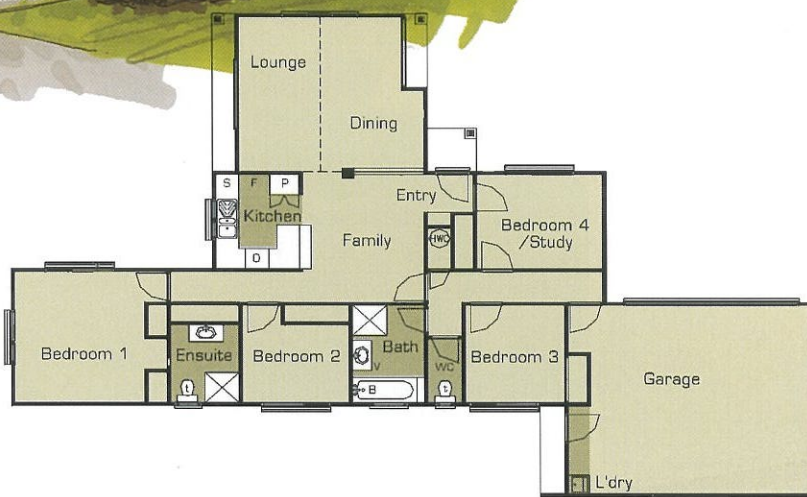
This exciting new range meets the needs of the new millennium, today. Inspired by the latest architectural trends in Australia and the USA, our Affordable Homes designers have cleverly incorporated a number of modern, innovative building materials and created a sense of

openness and freedom by limiting wasted hall spaces to maximise living areas. There's also a focus on family living and separate formal areas. Most Millennium Series plans feature ensuites to master bedrooms whilst all include a double attached internal access garage.

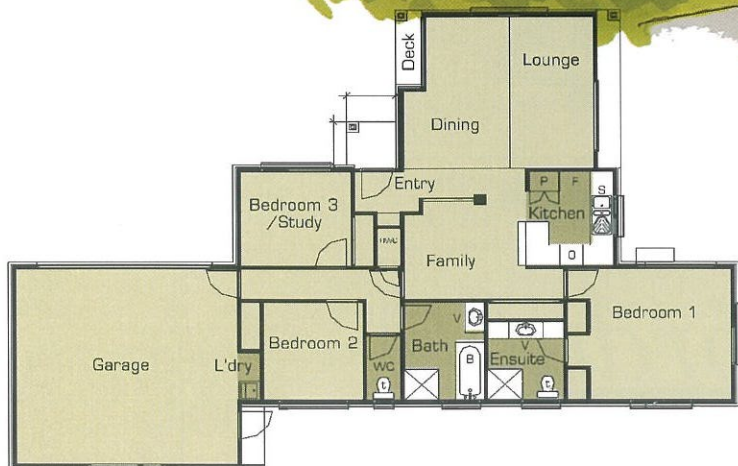
Orion 151m²



- * 4th bedroom can double as an office with access directly from the end formal entrance
- * Ensuite off master bedroom with his and hers wardrobes
- * Family dining area and adjacent lounge with a distinctive raked ceiling in the lounge and dining area



Magellan 145m²

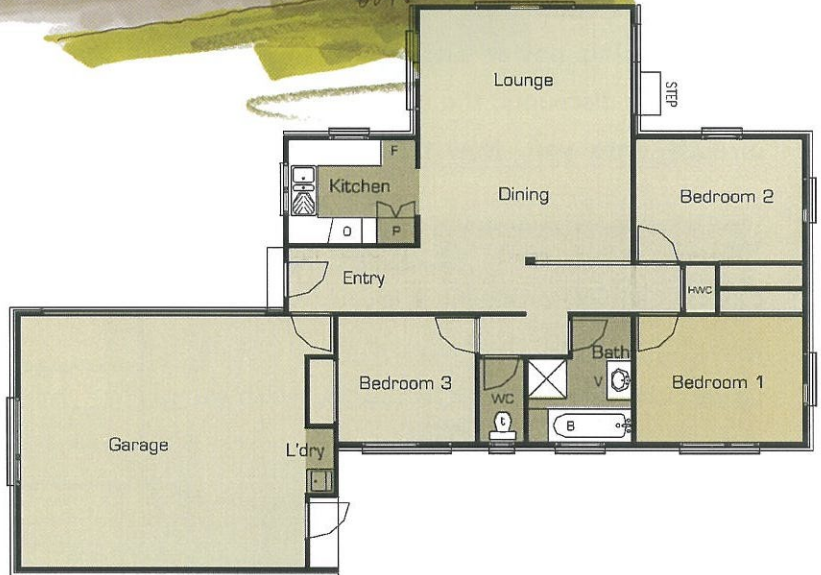


- * Half height walls to family area creates a feeling of open spaces
- * Master bedroom with sliding door direct and private access to the spacious garden of your dreams
- * Formal entry features recessed lit alcove

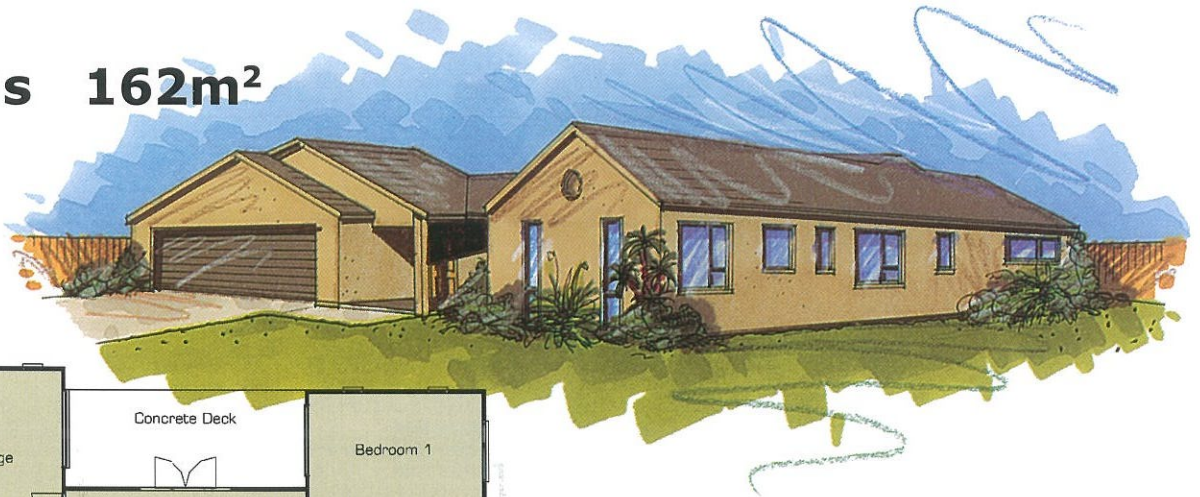
Pisces 130m²



- * An impressive entrance welcomes you to this compact yet very practical 3 bedroom home ideally suited to today's modern family
- * Spacious open lounge and dining area flows into an ample kitchen

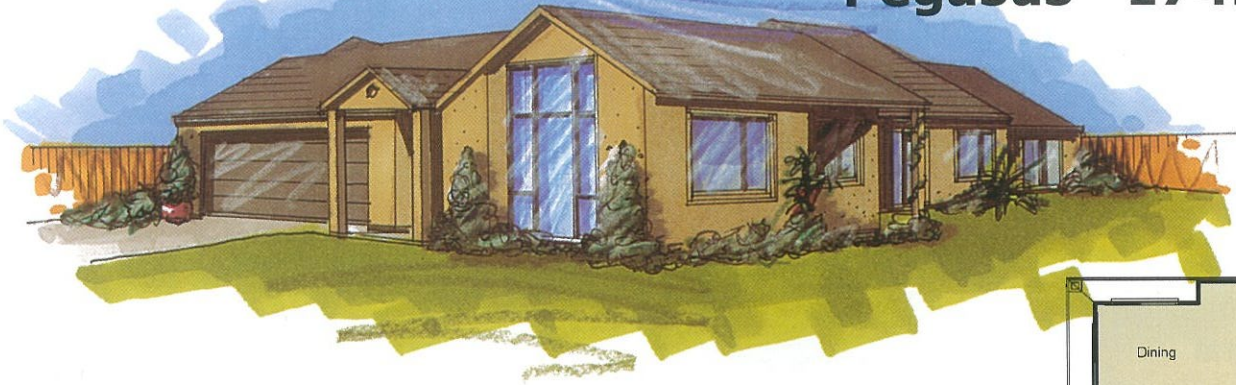


Taurus 162m²

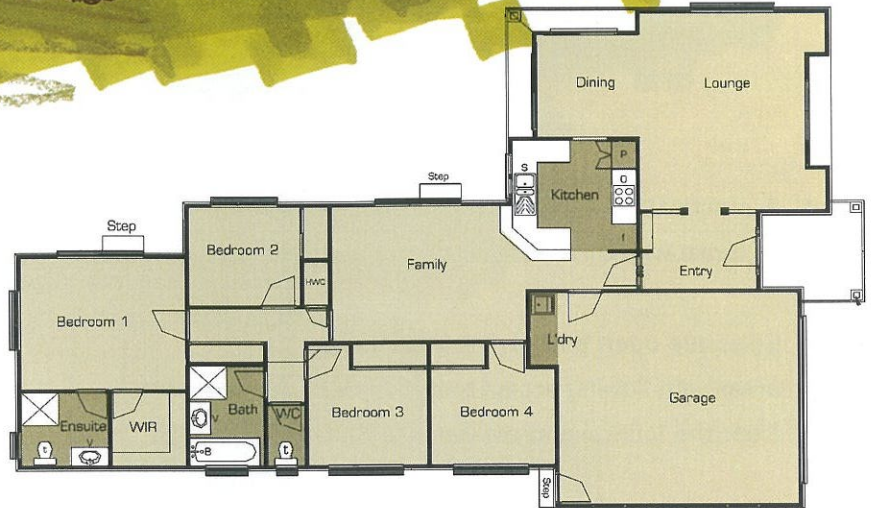


- * A grand executive home of superior style in plaster finish, featuring many beautiful gables giving exterior real presence
- * This home features spacious, flowing family living areas and separate formal lounge for those special evenings spent entertaining

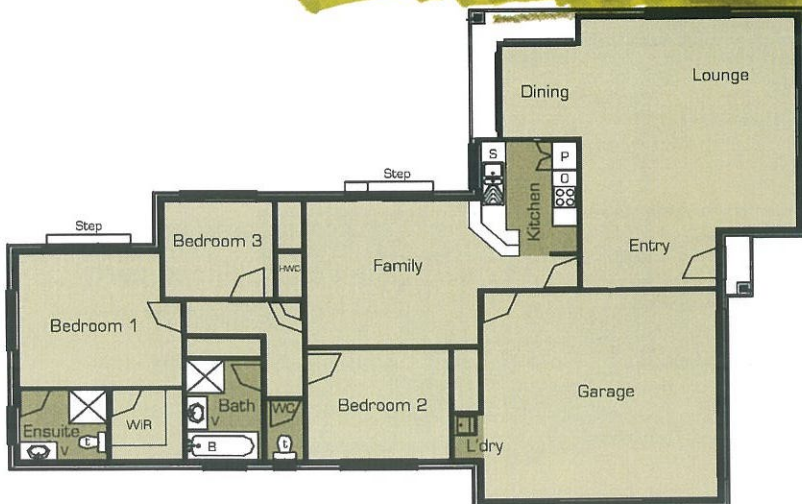
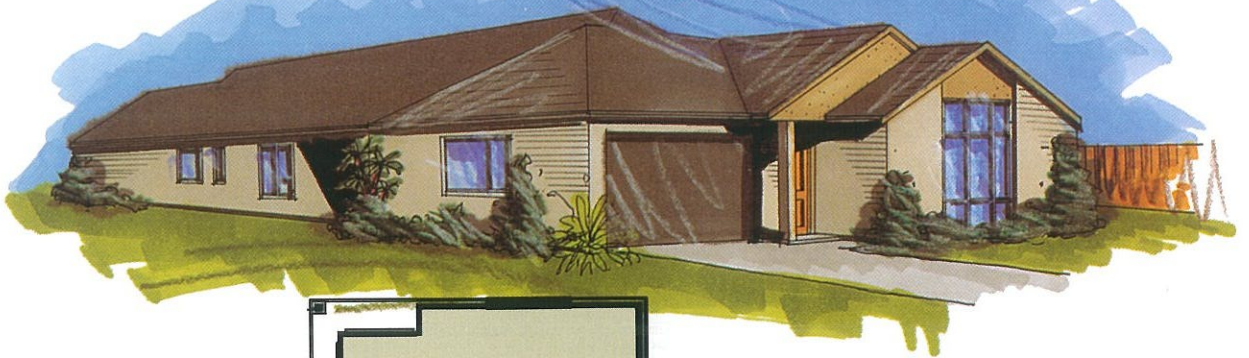
Pegasus 174m²



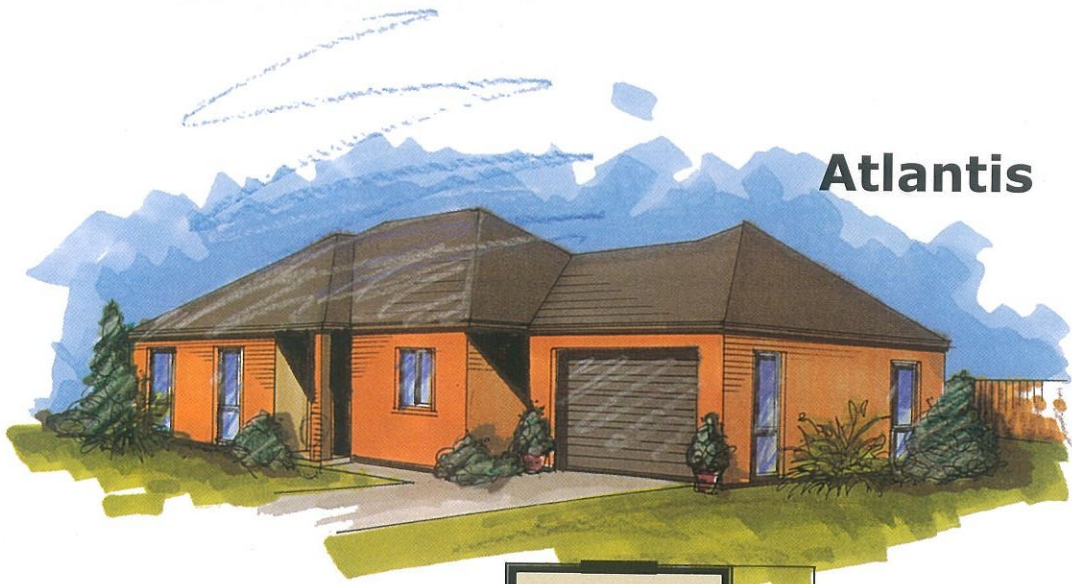
- * A truly grand 4 bedroom home
- * Arrive at an impressive entry hall where you can choose to take your dinner guests into the private, separate formal lounge and dining area - or take your kids' mates through past the kitchen and into the spacious family room to the rear



Scorpio 164m²

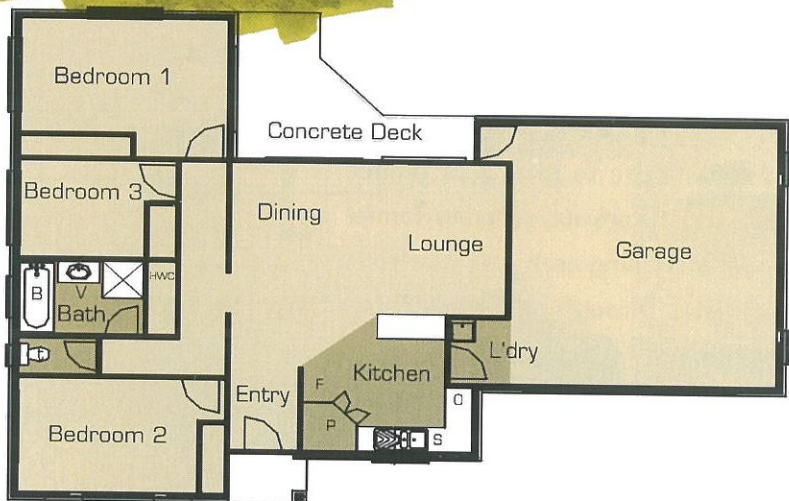


- * This home of 3 bedrooms has all the advantages of separate family living and formal lounge dining flowing off the formal entrance
- * A perfect choice for the family of the new millennium

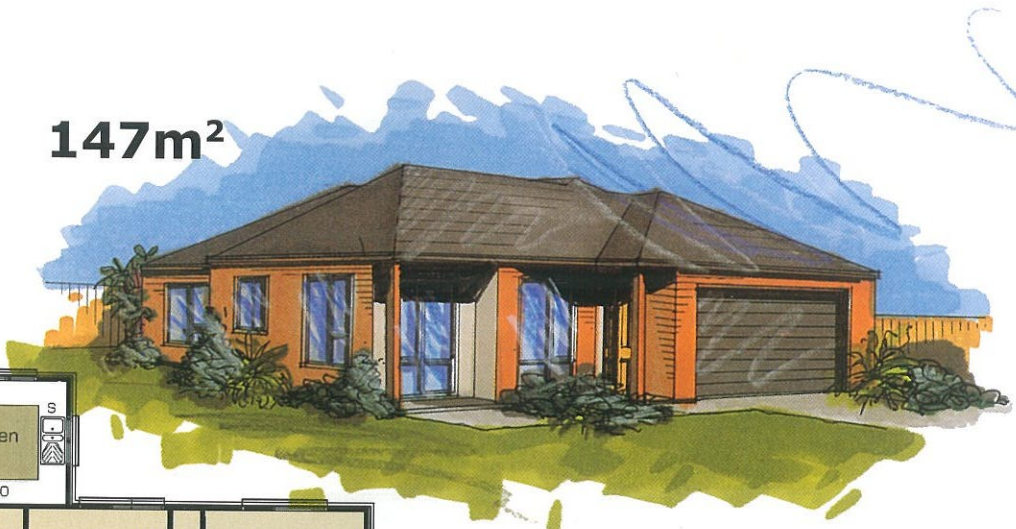


Atlantis 144m²

- * A practical family home ideally suited to those who thrive on a busy lifestyle
- * Spacious open plan living and dining areas with flowing access to deck areas from the lounge and master bedroom



Centaur 147m²



- * An inviting entrance way leads you to spacious open plan lounge and dining area, with a kitchen designed to handle the most demanding dinner party
- * A compact home which makes the most of today's tight sections a particularly practical solution for the smaller family