

Today

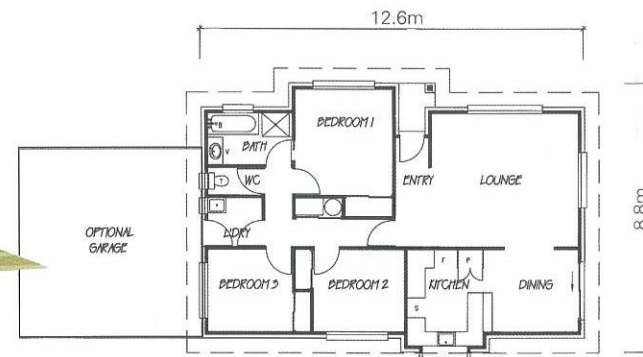
s e r i e s



Affordable
homes

The Today Series features nine superb brick and tile homes, thoughtfully designed for comfortable, relaxed living and entertaining. Luxury features are combined with quality materials and workmanship to create surprisingly affordable homes appropriate in any setting: rural or urban options (Four bedroom home plan options are also available).

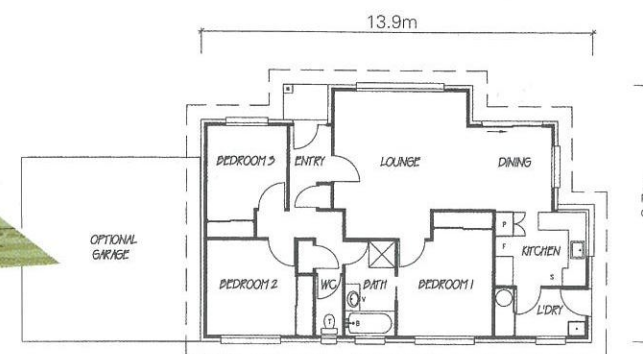
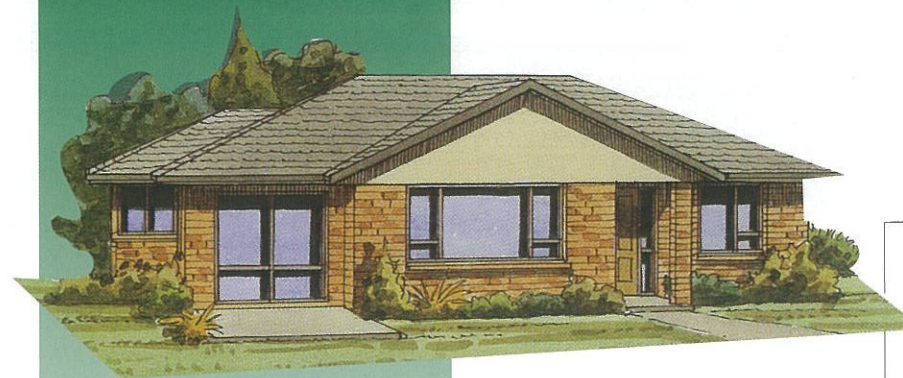
Resolution



99m2, 3 bedroom home

- clean uncluttered design
- open plan lounge/dining
- sunny living areas featuring full-length windows
- other home plans available include an attached garage and four bedroom option

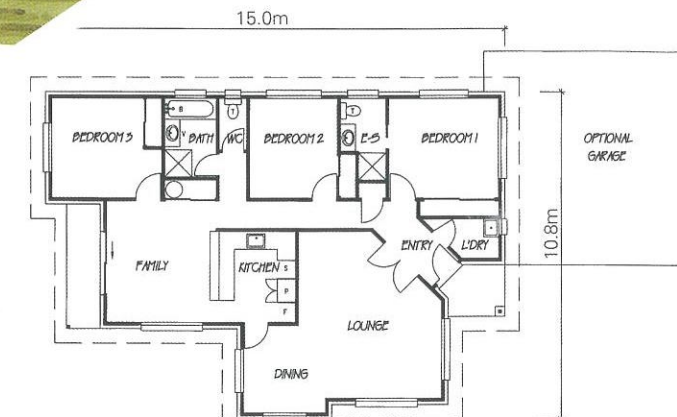
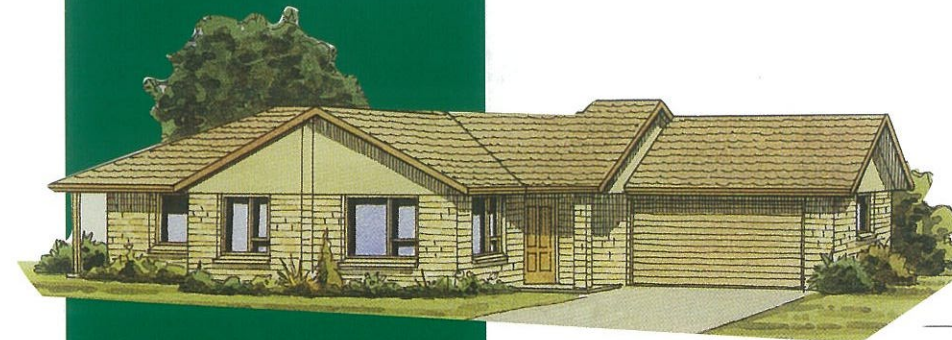
Endeavour



102 m2, 3 bedroom home

- brilliant use of living space with open plan lounge/dining
- practical, family-friendly kitchen/laundry
- generous master bedroom with virtual ensuite
- other home designs available include an attached garage and a four bedroom option.

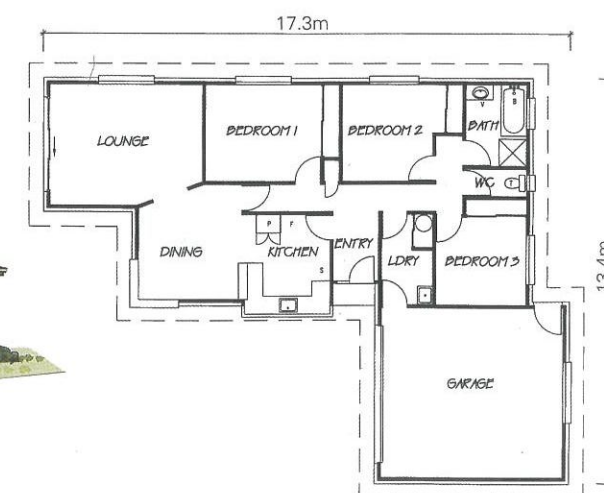
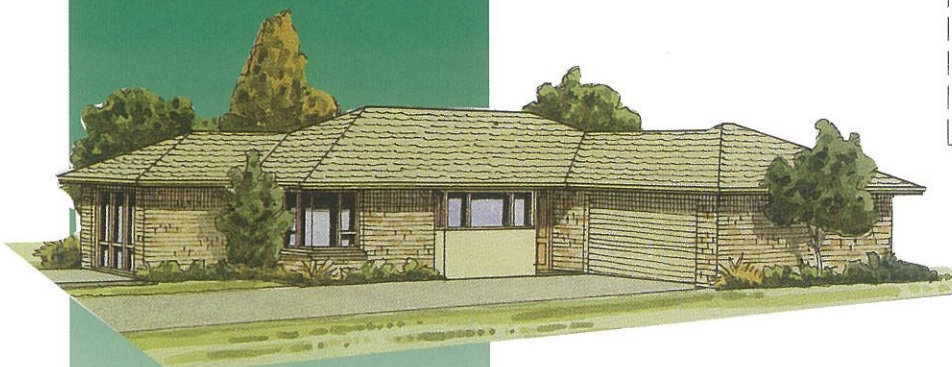
Discovery



125m2, 3 bedroom home

- kitchen and family room-centred design for casual living
- separate dining/lounge for entertaining
- master bedroom with ensuite
- other home plans available include an attached garage, a four bedroom option or both

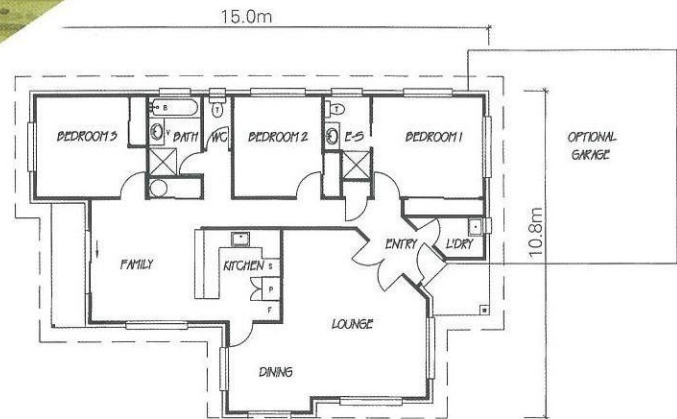
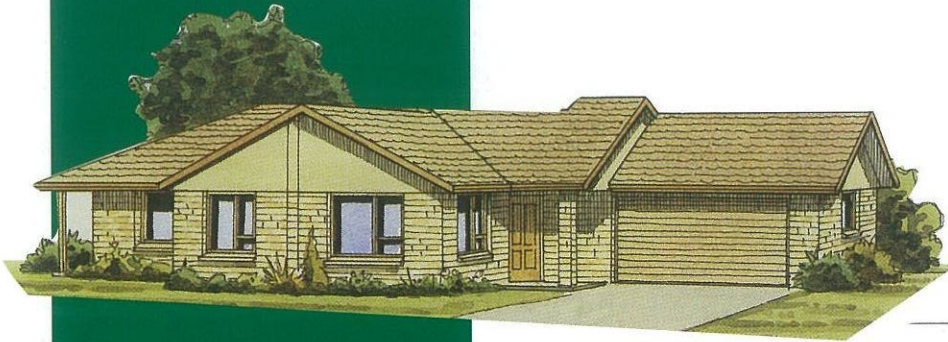
Bowendale



149m2, 3 bedroom home

- designed for sun and views, with box kitchen window
- smooth transition from kitchen to dining room and lounge
- internal access double garage
- large glass corner window in dining room
- large ranch slider in lounge

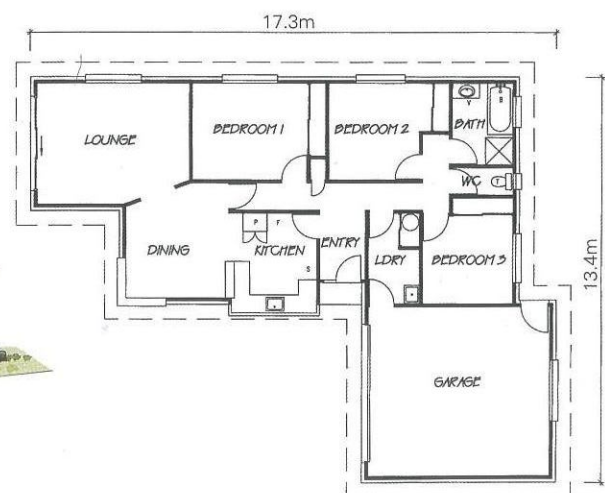
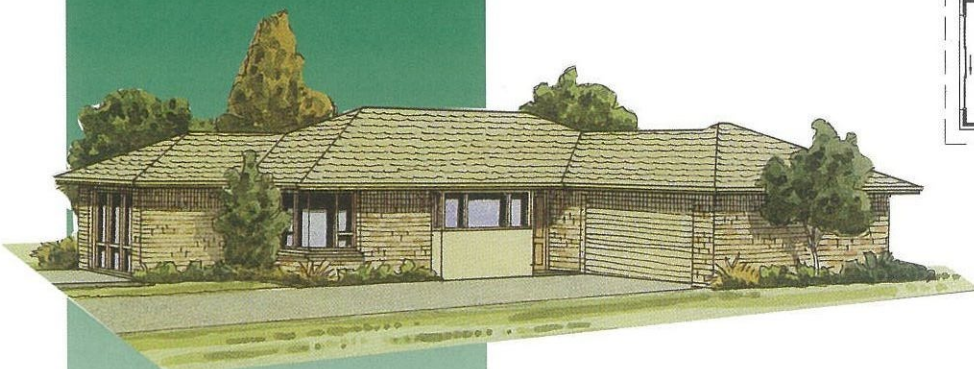
Discovery



125m², 3 bedroom home

- kitchen and family room-centred design for casual living
- separate dining/lounge for entertaining
- master bedroom with ensuite
- other home plans available include an attached garage, a four bedroom option or both

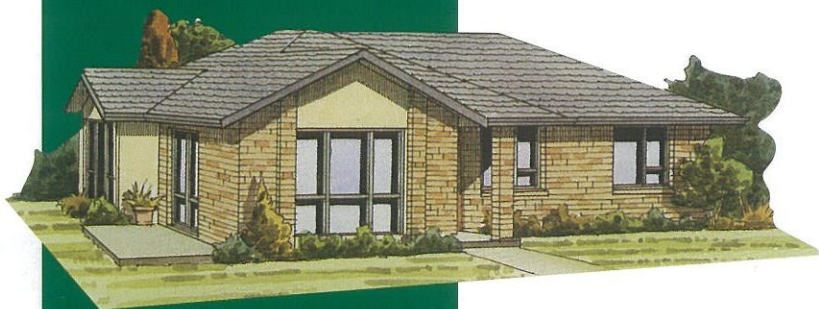
Bowendale



149m², 3 bedroom home

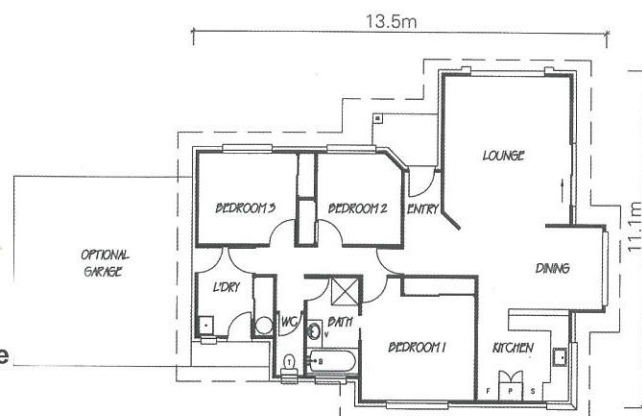
- designed for sun and views, with box kitchen window
- smooth transition from kitchen to dining room and lounge
- internal access double garage
- large glass corner window in dining room
- large ranch slider in lounge

Limerick



112m², 3 bedroom home

- open plan living
- grand entrance and approach to home
- large corner window in kitchen
- other home plans available include an attached garage, a 4 bedroom option or both

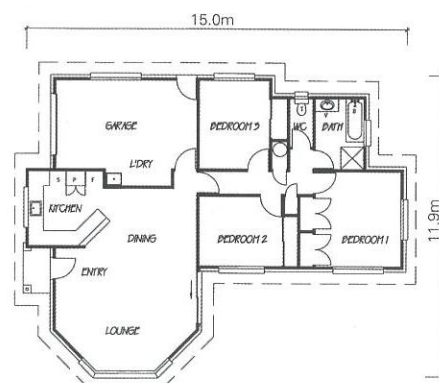


Marlborough



127m², 3 bedroom home

- open plan living
- internal access garage
- generous storage space in bedrooms
- grand entrance to home
- full wall windows in lounge
- other home plans available include an attached double garage, a 4 bedroom option or both



Northcote



103m², 3 bedroom home

- flexible living space with easy movement through kitchen/dining/lounge areas
- practical, uncluttered layout
- attractively shaped lounge
- other home plans available include an attached garage and a 4 bedroom home option

