

# Vision

---

s e r i e s



*Affordable*  
**homes**

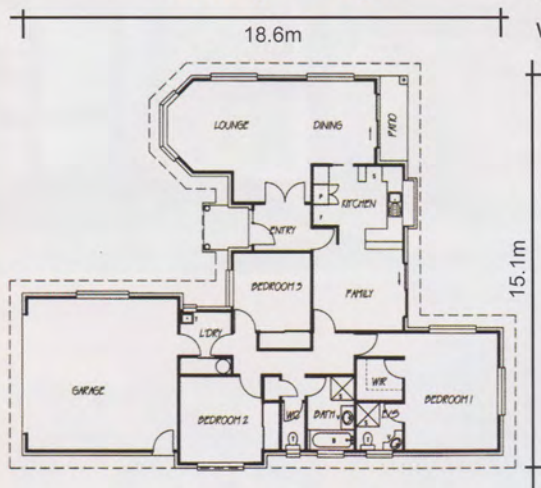
The Vision Series Collection features 5 unique different home designs, each appropriately designed for the needs of the New Zealand family. Built from permanent materials, these highly styled homes look and feel attractive and will provide your family with the quality of lifestyle living that you are looking for.

## T u s c a n y

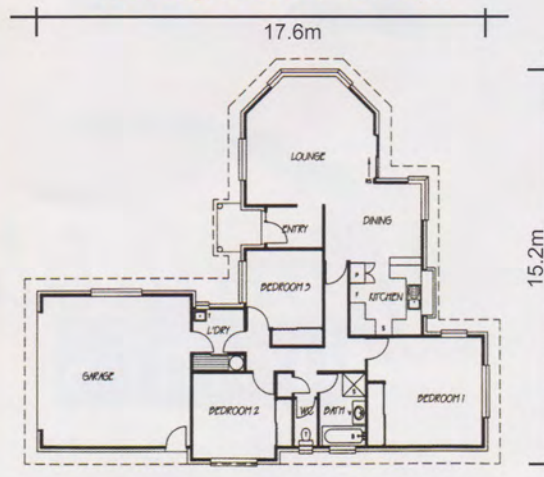


The Tuscany is designed for maximum flow throughout the home without wasting space. The cleverly laid out floor plan will fit onto sections providing a formal approach to the front of the house with private living to the rear.

Tuscany 174 sqm



Tuscany Premier 157 sqm



### FEATURES

- Attractively shaped lounge
- Brilliant use of open plan living space.
- Clean uncluttered design.
- Well designed separation between living and bedroom spaces.
- Internal access garage through laundry.

# Pharlap

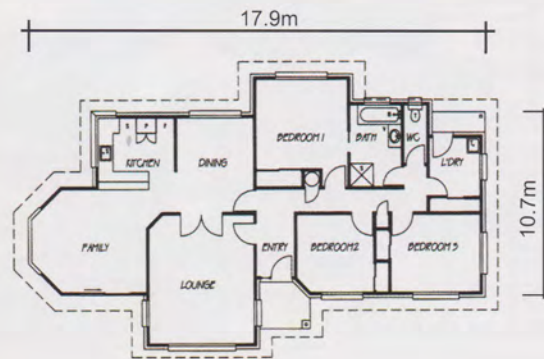
The "Thorough Bred" of home designs.

The Pharlap will fit onto long and narrow sections without losing any of the important features needed for today's family.

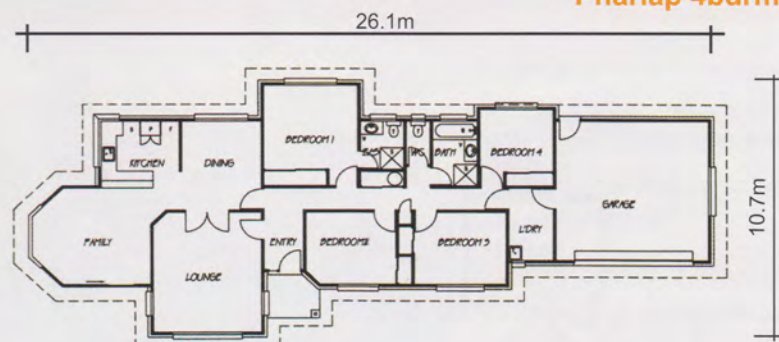


## FEATURES

- Two generously large living areas.
- Attractive centrally designed entry with split roof gable.
- large kitchen with adjacent / separate dining room.
- Practical sized laundry for active families.



**Pharlap 133 sqm**



**Pharlap 4bdrm 186 sqm**

### Please Note:

Exterior decking, paving and other landscaping are not included in our pricing. If you wish, they can be arranged as part of your overall home package.

At Affordable Homes, we are continually developing and enhancing our plans so some may vary in detail, from those pictured. Your New Home Consultant will be able to advise you on this.

The drawings reproduced here are artists impressions only. Larger copies of the floor plans are available from your New Home Consultant.

## P e l o r u s



**THE PELORUS** has developed from the specific needs of clients that have built with Affordable Homes in the past. It answers the needs of dual living with both formal and informal living areas.

### FEATURES

- generous use of double split roof gables.
- large master bedroom with ensuite.
- Formal lounge and dining area.
- Attractively shaped and centrally designed kitchen.
- Internal access double garage.

## V i e n n a



**THE VIENNA** is designed for the maximum street appeal. The grand entrance and lounge areas with the extra high ceiling gives this home the impression of grandeur and elegance.

### FEATURES

- Attractive approach and entry.
- Expansive open plan living through kitchen, dining & family areas.
- 2.7m high ceiling stud in the entry and lounge.
- Lounge has internally sloped ceiling.
- large family sized kitchen.
- large size master bedroom.

## M a n s f i e l d

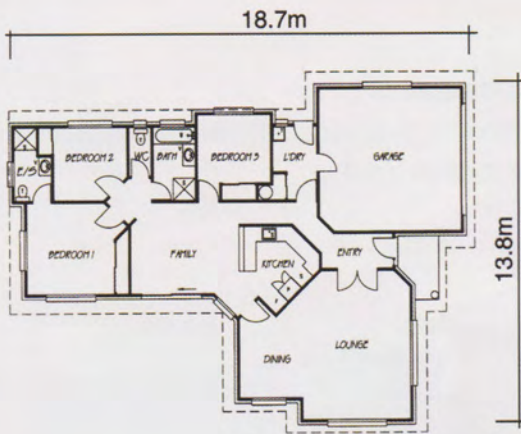


**LOOKING** for a home that has good design appeal and will absorb all day sun? here it is, the Mansfield! This home looks good from all angles as you live both indoors and out.

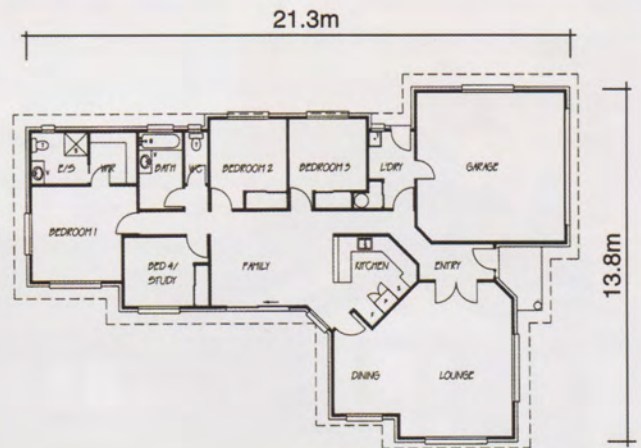
### FEATURES

- Attractively shaped garage/entry design.
- Interesting use of 45 degree walls
- Master bedroom separated from other bedrooms.
- Fun and friendly central kitchen, visually acceptable from the lounge.
- Well balance roof shape.

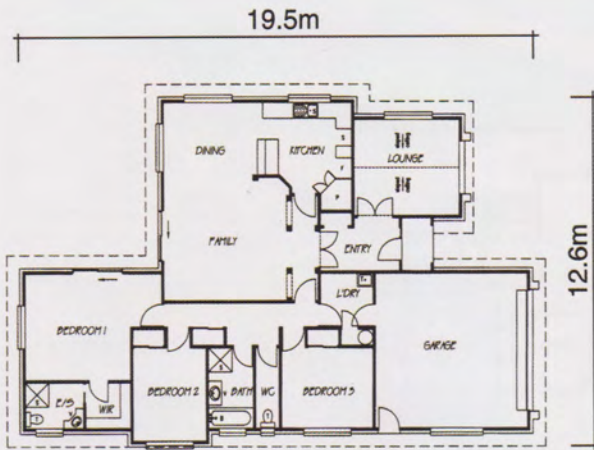
**Pelorus 173 sqm**



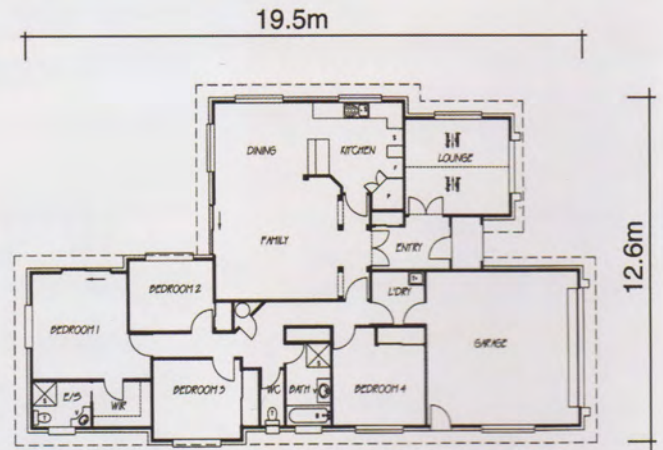
**Pelorus 4bdrm 192 sqm**



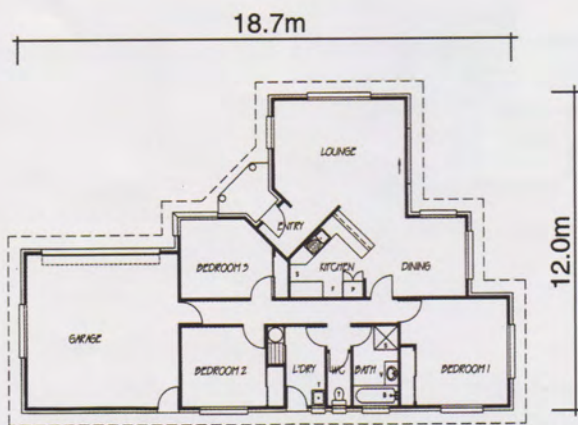
**Vienna 191 sqm**



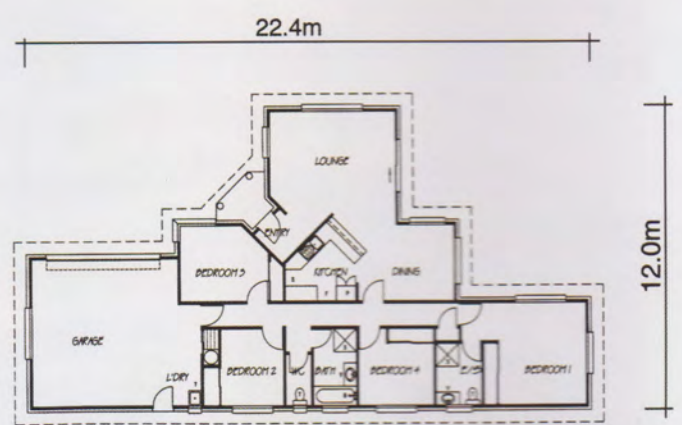
**Vienna 4bdrm 206 sqm**



**Mansfield 152 sqm**



**Mansfield 4bdrm 169 sqm**



## SIX GOOD REASONS TO BUY



**Reliability** - Affordable Homes build around 200 homes, throughout New Zealand every year.

**Value** - Your home will be built using high quality building products sourced from New Zealand suppliers. Our superior group buying power secures unbeatable discounts, which are passed onto you.

**Choice** - To fit your lifestyle and budget, we offer 30 home plans for you to choose from.

**Quality** - Our quality control goes beyond even the stringent requirements of building inspectors.

**Finance** - We have seven different options available, to help into your new home.

Ask your consultant for a copy of our **"Six Good Reasons"** brochure for the full details.

